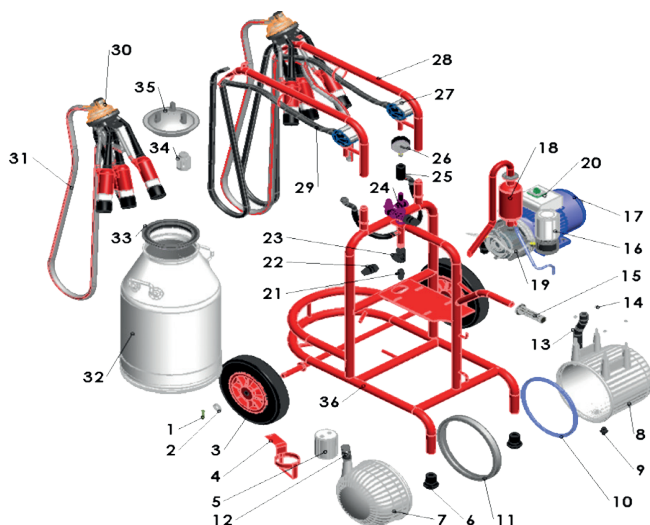




4. Components Of The Milking Machine



- | | |
|--|--|
| 1. COTTER PIN | 19. LUBRICATOR TUBE |
| 2. WASHER OF WHEEL | 20. MONOPHASE SWITCH FOR MILKING MACHINE |
| 3. BIG WHEEL 300X50 | 21. THREADED LONG PLASTIC UNION |
| 4. BRACKET OF OIL TANK | 22. REGULATOR |
| 5. WASTE OIL TANK | 23. PLASTIC "TEE" 1/2" |
| 6. RUBBER LEG SUPPORT | 24. VALVE KIT |
| 7. PLASTIC VACUUM TANK LEFT COVER SINGLE OUTPUT | 25. VACUUM GAUGE TUBE |
| 8. PLASTIC VACCUM TANK MOTOR CONNECTION | 26. VACUUM GAUGE |
| 9. PLASTIC VACUUM TANK STOPPER | 27. PULSATOR |
| 10. BIG VACUUM TANK INTERIOR GASKET | 28. ANTENNA FOR 40LT SINGLE BUCKET MACHINE |
| 11. BIG VACUUM TANK EXTERIOR GASKET | 29. TWIN RUBBER TUBE |
| 12. CONNECTING TUBE (TANK/PUMP) | 30. 300 CC CLUSTER PLASTIC COLLECTOR |
| 13. CONNECTING TUBE (TANK/CHASSIS) | 31. TRANSPARENT MILK TUBE |
| 14. M8 NUT | 32. 40LT STAINLES STEEL BUCKET 18Ø |
| 15. MILKING MACHINE CHASSIS RUBBER HANDLE | 33. BUCKET LID GASKET 18Ø |
| 16. COMPLETE LUBRICATOR | 34. BUCKET LID VALVE |
| 17. VACUUM PUMP OIL TYPE | 35. LID FOR STAINLESS STEEL BUCKET |
| 18. 200 & 350LT/MIN OIL TYPE VACUUM PUMP EXHAUST | 36. MACHINE FRAME FOR 40 LT. BUCKET |